



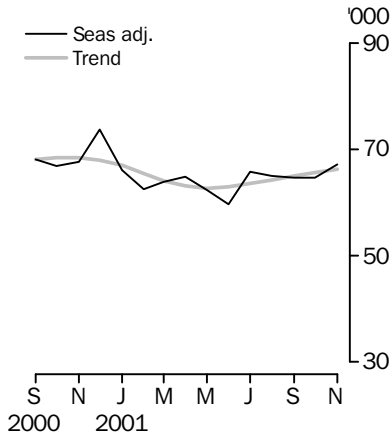
NEW MOTOR VEHICLE REGISTRATIONS

AUSTRALIA
PRELIMINARY

EMBARGO: 11:30AM (CANBERRA TIME) WED 9 JAN 2002

New vehicle registrations

Total vehicles



NOVEMBER KEY FIGURES

TREND ESTIMATES

	Nov 2001	% change Oct 2001 to Nov 2001	% change Nov 2000 to Nov 2001
Total new motor vehicle registrations	66 344	1.0	-3.1
Passenger vehicles	55 037	0.9	-5.5
Other vehicles	11 307	1.6	10.2

SEASONALLY ADJUSTED

	Nov 2001	% change Oct 2001 to Nov 2001	% change Nov 2000 to Nov 2001
Total new motor vehicle registrations	67 177	3.7	-0.8
Passenger vehicles	55 763	3.3	-3.2
Other vehicles	11 414	5.6	12.9

ORIGINAL ESTIMATES

	Nov 2001	% change Oct 2001 to Nov 2001	% change Nov 2000 to Nov 2001
Total new motor vehicle registrations	70 184	5.2	-1.7
Passenger vehicles	58 579	4.5	-4.4
Other vehicles	11 605	9.0	14.8

NOVEMBER KEY POINTS

TREND ESTIMATES

- The trend estimate for total new motor vehicle registrations has continued to rise in each of the six months since May this year. The November 2001 estimate is 1.0% higher than that for October 2001. Passenger vehicles rose by 0.9% and other vehicles rose by 1.6%.

TAKE CARE!
Trend estimates are revised as new monthly data become available.

SEASONALLY ADJUSTED ESTIMATES

- The seasonally adjusted estimate for total new motor vehicle registrations in Australia rose by 3.7% in November 2001 compared with the previous month. Rises were recorded in Victoria, Queensland and Western Australia while falls were recorded in the other States and in the two Territories.

ORIGINAL ESTIMATES

- Total new motor vehicle registrations rose by 5.2% in November 2001 compared with the previous month. Falls were recorded in Tasmania and the Northern Territory while rises were recorded in the mainland States and the Australian Capital Territory. Passenger vehicles rose by 4.5% and other vehicles rose by 9.0%.

- For further information about these and related statistics, contact Robin Walden on Brisbane 07 3222 6180, or the National Information and Referral Service on 1300 135 070.

NOTES

FORTHCOMING ISSUES

ISSUE

December 2001

RELEASE DATE

30 January 2002

a) The December 2001 issue will be the final release of this publication.

CHANGES IN THIS ISSUE

This issue includes changes to the seasonally adjusted series and the trend estimate series following the annual re-estimation of the seasonal factors.

CESSATION OF THIS PUBLICATION

The ABS will cease to publish statistics on New Motor Vehicle Registrations following the release of the December 2001 issue of this publication. The ABS intends to publish monthly statistics in original, seasonally adjusted and trend terms based on sales of new motor vehicles compiled by the Federal Chamber of Automotive Industries from the reference month of January 2002. More detail about this cessation and the future role of the ABS in providing vehicle statistics, is covered in *Information Paper: Developments in New Motor Vehicle Statistics* (Cat. no. 9313.0). A copy of this paper is available from the ABS website (www.abs.gov.au). For more information contact Kevin Yeadon by telephone on (02) 6252 6255 or by email at k.yeadon@abs.gov.au.

TREND REVISIONS

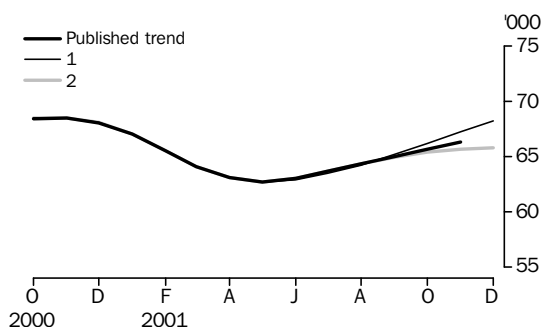
The most recent trend estimates are likely to be revised when new seasonally adjusted estimates become available.

The graph below presents the effect of two possible scenarios on the previous trend estimates:

- 1** The December seasonally adjusted estimate for total vehicle registrations is higher than the November seasonally adjusted estimate by 4.2%.
- 2** The December seasonally adjusted estimate for total vehicle registrations is lower than the November seasonally adjusted estimate by -4.2%.

The percentage change of 4.2% was chosen because the average absolute percentage change, based on the last 11 years, has been 4.2%.

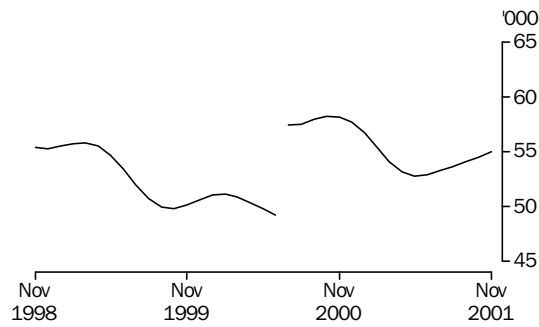
TAKE CARE!
Trend estimates are revised as new monthly data become available.



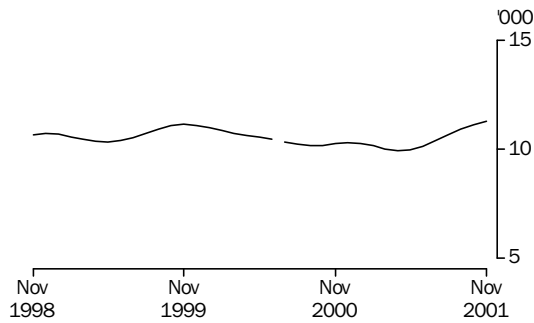
T. J. Skinner
Acting Australian Statistician

VEHICLE REGISTRATIONS BY TYPE: Trend series (a)

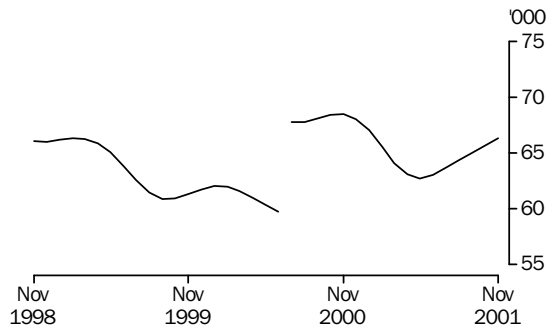
PASSENGER VEHICLES



OTHER VEHICLES



TOTAL VEHICLES (EXCLUDING MOTOR CYCLES)



(a) A break in the trend series occurred between June and July 2000 as a result of changed behaviour arising from the introduction of the New Tax System.

NEW MOTOR VEHICLES, Registrations By Type: All Series

Month	NUMBER.....			CHANGE FROM PREVIOUS MONTH.....		
	Passenger vehicles no.	Other vehicles no.	Total no.	Passenger vehicles %	Other vehicles %	Total %
ORIGINAL						
2000						
September	54 759	9 227	63 986	-16.8	-12.6	-16.2
October	56 529	9 734	66 263	3.2	5.5	3.6
November	61 282	10 106	71 388	8.4	3.8	7.7
December	62 717	10 023	72 740	2.3	-0.8	1.9
2001						
January	46 984	8 157	55 141	-25.1	-18.6	-24.2
February	49 281	9 345	58 626	4.9	14.6	6.3
March	56 765	10 863	67 628	15.2	16.2	15.4
April	48 624	8 676	57 300	-14.3	-20.1	-15.3
May	54 562	10 946	65 508	12.2	26.2	14.3
June	57 622	13 032	70 654	5.6	19.1	7.9
July	57 325	11 087	68 412	-0.5	-14.9	-3.2
August	55 969	10 873	66 842	-2.4	-1.9	-2.3
September	48 745	9 704	58 449	-12.9	-10.8	-12.6
October	56 078	10 648	66 726	15.0	9.7	14.2
November	58 579	11 605	70 184	4.5	9.0	5.2
SEASONALLY ADJUSTED						
2000						
September	58 072	10 061	68 133	-8.7	-4.6	-8.1
October	56 744	10 136	66 880	-2.3	0.7	-1.8
November	57 627	10 110	67 737	1.6	-0.3	1.3
December	63 204	10 543	73 747	9.7	4.3	8.9
2001						
January	55 597	10 576	66 173	-12.0	0.3	-10.3
February	52 481	10 031	62 512	-5.6	-5.2	-5.5
March	53 913	10 094	64 007	2.7	0.6	2.4
April	55 009	9 959	64 968	2.0	-1.3	1.5
May	52 676	9 683	62 359	-4.2	-2.8	-4.0
June	50 050	9 761	59 811	-5.0	0.8	-4.1
July	55 267	10 616	65 883	10.4	8.8	10.2
August	54 114	10 937	65 051	-2.1	3.0	-1.3
September	53 651	11 090	64 741	-0.9	1.4	-0.5
October	54 001	10 804	64 805	0.7	-2.6	0.1
November	55 763	11 414	67 177	3.3	5.6	3.7
TREND ESTIMATES (a)						
2000						
September	57 956	10 181	68 137	0.7	-0.5	0.5
October	58 261	10 193	68 454	0.5	0.1	0.5
November	58 219	10 261	68 480	-0.1	0.7	0.0
December	57 755	10 321	68 076	-0.8	0.6	-0.6
2001						
January	56 751	10 289	67 040	-1.7	-0.3	-1.5
February	55 372	10 164	65 536	-2.4	-1.2	-2.2
March	54 102	10 028	64 130	-2.3	-1.3	-2.1
April	53 177	9 938	63 115	-1.7	-0.9	-1.6
May	52 772	9 964	62 736	-0.8	0.3	-0.6
June	52 929	10 131	63 060	0.3	1.7	0.5
July	53 301	10 395	63 696	0.7	2.6	1.0
August	53 660	10 673	64 333	0.7	2.7	1.0
September	54 095	10 922	65 017	0.8	2.3	1.1
October	54 527	11 133	65 660	0.8	1.9	1.0
November	55 037	11 307	66 344	0.9	1.6	1.0

(a) Trend estimates for May 2001 to October 2001 have been revised.

NEW MOTOR VEHICLES, Registrations By Type: **Original**

Month	Passenger vehicles	Light commercial vehicles	Rigid trucks	Articulated trucks	Non-freight carrying trucks	Buses	Total (excludes motor cycles)	Motor cycles
2000								
September	54 759	7 436	1 057	297	148	289	63 986	3 008
October	56 529	7 969	1 164	288	76	237	66 263	3 177
November	61 282	8 234	1 179	299	105	289	71 388	3 423
December	62 717	8 402	1 001	221	124	275	72 740	2 819
2001								
January	46 984	7 018	629	226	55	229	55 141	2 668
February	49 281	7 849	834	264	176	222	58 626	2 563
March	56 765	9 207	1 002	244	160	250	67 628	3 221
April	48 624	7 254	866	219	118	219	57 300	2 655
May	54 562	9 113	1 159	212	175	287	65 508	2 957
June	57 622	11 165	1 095	329	175	268	70 654	2 612
July	57 325	9 255	1 135	321	138	238	68 412	2 527
August	55 969	9 052	1 126	317	120	258	66 842	3 113
September	48 745	8 034	1 044	300	107	219	58 449	2 658
October	56 078	8 670	1 299	326	85	268	66 726	3 212
November	58 579	9 504	1 292	401	147	261	70 184	3 399

NEW MOTOR VEHICLES, Registrations By State: All series

Month	New South Wales	Victoria	Queensland	South Australia	Western Australia	Tasmania	Northern Territory	Australian Capital Territory	Australia
ORIGINAL									
2000									
September	20 908	17 197	12 122	4 138	6 386	1 545	590	1 100	63 986
October	22 095	18 629	12 428	4 241	5 978	1 241	601	1 050	66 263
November	24 062	19 859	12 948	4 534	6 610	1 436	614	1 325	71 388
December	23 547	20 942	13 362	4 649	6 407	2 035	601	1 197	72 740
2001									
January	18 657	15 045	10 214	3 436	5 286	1 039	432	1 032	55 141
February	20 007	15 940	11 129	3 637	5 482	996	430	1 005	58 626
March	23 000	17 537	13 479	4 169	6 460	1 195	583	1 205	67 628
April	19 167	15 804	10 913	3 668	5 048	925	726	1 049	57 300
May	22 383	18 363	11 884	4 168	5 705	1 174	696	1 135	65 508
June	22 824	18 797	15 253	4 585	6 213	1 108	714	1 160	70 654
July	22 579	19 567	13 012	4 273	6 013	1 288	546	1 134	68 412
August	21 788	18 276	13 405	4 305	6 124	1 259	499	1 186	66 842
September	19 113	15 822	11 667	3 865	5 334	1 137	537	974	58 449
October	22 440	18 752	12 339	4 360	5 592	1 476	638	1 129	66 726
November	23 284	19 588	13 082	4 667	6 429	1 401	575	1 158	70 184
SEASONALLY ADJUSTED									
2000									
September	22 644	18 298	13 073	4 279	6 648	1 355	651	1 185	68 133
October	22 171	18 276	12 956	4 278	6 218	1 257	604	1 120	66 880
November	22 445	18 507	13 122	4 211	6 283	1 360	611	1 198	67 737
December	25 033	21 169	13 331	4 624	6 300	1 369	709	1 212	73 747
2001									
January	22 034	18 634	12 152	4 298	5 980	1 302	566	1 207	66 173
February	21 204	16 865	11 930	3 826	5 797	1 285	495	1 110	62 512
March	21 475	16 813	12 781	3 998	5 948	1 306	509	1 177	64 007
April	21 377	18 198	12 331	4 109	5 837	1 218	713	1 185	64 968
May	21 039	17 487	11 632	4 031	5 288	1 209	561	1 112	62 359
June	19 453	16 322	11 921	3 935	5 436	1 198	557	989	59 811
July	21 316	18 901	12 512	4 153	6 134	1 190	580	1 097	65 883
August	21 938	17 365	13 123	4 099	5 820	1 111	526	1 069	65 051
September	21 593	17 495	12 755	4 248	5 921	1 053	592	1 084	64 741
October	21 777	17 523	12 352	4 310	5 688	1 416	620	1 119	64 805
November	21 666	18 572	13 752	4 238	5 946	1 327	577	1 099	67 177
TREND ESTIMATES (a)									
2000									
September	22 647	18 428	13 124	4 320	6 503	1 291	657	1 167	68 137
October	22 795	18 762	13 050	4 316	6 384	1 327	644	1 176	68 454
November	22 857	18 943	12 948	4 305	6 277	1 343	625	1 182	68 480
December	22 788	18 895	12 816	4 277	6 171	1 338	604	1 187	68 076
2001									
January	22 514	18 562	12 619	4 213	6 039	1 321	587	1 185	67 040
February	22 021	18 069	12 377	4 124	5 895	1 299	577	1 174	65 536
March	21 458	17 644	12 200	4 050	5 772	1 276	575	1 155	64 130
April	20 997	17 373	12 112	4 003	5 687	1 242	573	1 128	63 115
May	20 775	17 305	12 123	3 999	5 656	1 203	574	1 101	62 736
June	20 845	17 424	12 232	4 041	5 683	1 176	577	1 082	63 060
July	21 067	17 578	12 394	4 100	5 740	1 167	575	1 075	63 696
August	21 301	17 662	12 591	4 150	5 801	1 180	573	1 075	64 333
September	21 537	17 756	12 810	4 199	5 851	1 207	576	1 081	65 017
October	21 732	17 862	13 020	4 244	5 887	1 244	580	1 091	65 660
November	21 902	18 028	13 225	4 284	5 926	1 283	593	1 103	66 344

(a) Trend estimates for May 2001 to October 2001 have been revised.

NEW PASSENGER VEHICLES, Top Makes/Models: **Original**—November 2001

<i>Make/Model</i>	<i>New South Wales</i>	<i>Victoria</i>	<i>Queensland</i>	<i>South Australia</i>	<i>Western Australia</i>	<i>Tasmania</i>	<i>Northern Territory</i>	<i>Australian Capital Territory</i>	Australia
Holden									
Commodore/Calais	2 671	2 246	1 389	725	689	108	47	141	8 016
Astra	995	760	445	198	218	31	12	76	2 735
Vectra	220	210	97	34	48	12	2	14	637
Other	570	528	287	108	126	25	8	23	1 675
Total	4 456	3 744	2 218	1 065	1 081	176	69	254	13 063
Toyota									
Corolla	852	640	443	169	293	97	33	22	2 549
Camry/Vienta	761	635	425	90	221	52	41	30	2 255
Rav4	418	292	239	70	77	29	9	19	1 153
Other	1 272	1 237	866	212	383	59	68	32	4 129
Total	3 303	2 804	1 973	541	974	237	151	103	10 086
Ford									
Falcon/Fairmont	1 244	1 886	737	310	389	107	34	64	4 771
Laser	368	462	199	141	56	18	6	33	1 283
Escape	103	97	51	23	15	5	1	8	303
Other	90	174	66	34	38	5	5	9	421
Total	1 805	2 619	1 053	508	498	135	46	114	6 778
Mitsubishi									
Magna	459	574	260	281	274	109	12	27	1 996
Lancer	395	393	246	102	203	26	14	19	1 398
Pajero	219	142	186	41	72	18	3	18	699
Other	430	198	201	75	53	13	3	22	995
Total	1 503	1 307	893	499	602	166	32	86	5 088
Hyundai									
Accent	602	430	361	117	423	23	11	23	1 990
Lantra/Elantra	312	235	203	69	119	31	4	20	993
Sonata	122	66	63	22	49	9	3	3	337
Other	135	86	79	34	60	9	3	10	416
Total	1 171	817	706	242	651	72	21	56	3 736
Nissan									
Pulsar	509	468	327	77	170	38	6	37	1 632
Patrol	182	151	172	46	88	4	6	6	655
X-Trail	165	101	91	16	36	12	3	7	431
Other	214	158	172	24	40	7	2	9	626
Total	1 070	878	762	163	334	61	17	59	3 344
Mazda									
323	356	258	229	66	61	19	8	22	1 019
Tribute	331	210	130	59	48	13	2	13	806
626	84	94	47	30	20	3		7	285
Other	145	98	63	27	21	8	4	13	379
Total	916	660	469	182	150	43	14	55	2 489

EXPLANATORY NOTES

INTRODUCTION

1 This publication presents monthly data for registrations of new motor vehicles.

2 The statistics in this publication use the Vehicle Identification Number (VIN), adopted by the State and Territory motor vehicle registration authorities. The information contained in the VIN allows more accurate classification of vehicles. In the case of some States, data processed using the VIN system are not strictly comparable with data processed prior to December 1990.

SCOPE AND COVERAGE

3 Motor vehicle registration statistics are obtained from State and Territory motor vehicle registration authorities. The statistics reflect information recorded in registration documents. While the statistics do not depart significantly from actual registrations during the period, a number of registrations processed in a month actually relate to vehicles registered prior to that month.

4 New motor vehicle registrations are obtained from New South Wales, Victoria, Queensland and Western Australia registration authorities on a weekly basis. Other registries provide data for each calendar month. The ABS processes the weekly registration data provided for the above-mentioned States and includes data for the relevant month in this publication. Data referring to the next month are withheld and included in the next month's publication. In some months, the ABS processes five weeks of data for the above States, while other months include four weeks of data. In months where five weeks of data are processed and depending on the actual pattern of registration processing, it is possible that there will be a greater number of registrations recorded because the carry forward from the previous month is likely to be greater than the carry over to the next month.

5 The scope of the statistics:

- includes:
 - passenger vehicles
 - light commercial vehicles
 - trucks
 - buses
 - motorcycles (note: not included in totals)
 - vehicles with diplomatic and consular plates
 - State and Commonwealth owned vehicles

- excludes:
 - vehicles belonging to the defence forces
 - recreation vehicles such as trail bikes and sand dune buggies (in those States where registration is required).

SEASONAL ADJUSTMENT

6 Seasonal adjustment is a means of removing the estimated effects of normal seasonal variation from the series so that the effects of other influences can be more clearly recognised.

7 Seasonal adjustment does not remove from the series the effect of irregular or non-seasonal influences (e.g. the introduction of new models, processing delays, industrial disputes).

EXPLANATORY NOTES

SEASONAL ADJUSTMENT

continued

8 Irregular influences that are highly volatile can make it difficult to interpret the series even after adjustment for seasonal variation.

9 Extreme care should be exercised in using the seasonally adjusted series for new motor vehicle registrations in Tasmania, the Northern Territory and the Australian Capital Territory. The small numbers and volatile nature of these data makes reliable estimation of the seasonal pattern very difficult.

10 Seasonally adjusted series are calculated for the 'Passenger vehicles', 'Other vehicles' and 'Total vehicles' series for each State and Territory and are aggregated to obtain the total for Australia.

11 Seasonal adjustment factors are analysed and revised as necessary annually.

TREND ESTIMATES

12 The smoothing of seasonally adjusted series to create trend estimates reduces the impact of the irregular component of the seasonally adjusted series. The trend estimates are derived by applying a 13-term Henderson-weighted moving average to the respective seasonally adjusted series. These trend series are used to analyse the underlying behaviour of the series over time.

13 While this smoothing technique enables trend estimates to be produced for the latest month, it does result in revisions to the trend estimates for the most recent months as data for subsequent months become available. Generally subsequent revisions become smaller and after three months, usually have a negligible impact on the series. Changes in the original data and re-estimation of seasonal factors may also lead to revisions to the trend. For more information, see *A Guide to Interpreting Time Series—Monitoring 'Trends'—an Overview* (Cat. no. 1348.0) or contact the Assistant Director, Time Series Analysis on (02) 6252 6345.

RELATED PUBLICATIONS

14 For a more detailed break-up of the monthly figures presented here, enquiries should be made to the National Information and Referral Service on 1300 135 070 or to Client Services in any ABS office.

Annual data on the latest total vehicle registrations are published in *Motor Vehicle Census, Australia, 31 March 2001* (Cat. no. 9309.0).

SYMBOLS AND OTHER USAGES

. . not applicable.

n.p. not available for publication.

G L O S S A R Y

Articulated trucks	Vehicles constructed primarily for load carrying consisting of a prime mover having no significant load carrying area but with a turn table device which can be linked to a trailer. With or without a trailer the gross combination mass will be 3.5 tonnes or more.
Buses	Vehicles constructed for the carriage of passengers. Included are all passenger vehicles with 10 seats or more, including the driver's seat.
Light commercial vehicles	Describes goods carrying vehicles less than 3.5 tonnes gross vehicle mass. Included are utilities, panel vans, cab-chassis and forward control vehicles (whether four-wheel drive or not).
Motor cycles	Includes 2 and 3 wheeled mopeds, scooters, motor tricycles and motor cycles with side cars.
Non-freight carrying trucks	Includes specialist vehicles such as ambulances, mobile cranes or vehicles fitted with special purpose equipment and having no goods carrying capacity.
Passenger vehicles	Includes cars, station wagons, four-wheel drive passenger vehicles and forward control passenger vehicles with up to nine seats (including the driver).
Registrations	This includes all registrations processed by the motor vehicle registration authorities in the States and Territories during the relevant period.
Rigid trucks	Vehicles constructed primarily for load carrying with a gross vehicle mass of 3.5 tonnes or more.
VIN	The Vehicle Identification Number (VIN) uniquely identifies each vehicle. Embedded in the number are details of make and model together with other relevant information about the vehicle. The VIN is collected by the motor vehicle registration authorities at the time of registration.

FOR MORE INFORMATION...

- INTERNET* **www.abs.gov.au** the ABS web site is the best place to start for access to summary data from our latest publications, information about the ABS, advice about upcoming releases, our catalogue, and Australia Now—a statistical profile.
- LIBRARY* A range of ABS publications is available from public and tertiary libraries Australia-wide. Contact your nearest library to determine whether it has the ABS statistics you require, or visit our web site for a list of libraries.
- CPI INFOLINE* For current and historical Consumer Price Index data, call 1902 981 074 (call cost 77c per minute).
- DIAL-A-STATISTIC* For the latest figures for National Accounts, Balance of Payments, Labour Force, Average Weekly Earnings, Estimated Resident Population and the Consumer Price Index call 1900 986 400 (call cost 77c per minute).

INFORMATION SERVICE

Data which have been published and can be provided within five minutes are free of charge. Our information consultants can also help you to access the full range of ABS information—ABS user-pays services can be tailored to your needs, time frame and budget. Publications may be purchased. Specialists are on hand to help you with analytical or methodological advice.

- PHONE* **1300 135 070**
- EMAIL* **client.services@abs.gov.au**
- FAX* 1300 135 211
- POST* Client Services, ABS, GPO Box 796, Sydney 1041

WHY NOT SUBSCRIBE?

ABS subscription services provide regular, convenient and prompt deliveries of ABS publications and products as they are released. Email delivery of monthly and quarterly publications is available.

- PHONE* 1300 366 323
- EMAIL* subscriptions@abs.gov.au
- FAX* 03 9615 7848
- POST* Subscription Services, ABS, GPO Box 2796Y, Melbourne 3001



2930100011010
ISSN 1323-4528

RRP \$18.00

© Commonwealth of Australia 2002

Produced by the Australian Bureau of Statistics